



2017



ANNUAL REPORT

SECOND PRESBYTERIAN CHURCH
343 Meeting Street, Charleston, SC 29403
(843) 723 - 9237 2ndpc.org

SECOND PRESBYTERIAN CHURCH



2017 ANNUAL REPORT

A Dynamic Christ-centered Congregation
Meeting people at their point of need, inviting all
into a dynamic relationship with Christ

SECOND PRESBYTERIAN CHURCH
343 Meeting Street
Charleston, SC 29403
843) 723 – 9237
2ndpc.org

TABLE OF CONTENTS

What We Believe	2
Message from Our Pastor.....	3
Life of the Church	4
New Members.....	5
The Chapel Service	6
Music and Worship.....	6-7
Christian Education.....	8
SPK - Kindergarten.....	9
The Journey	10
Church Leaders	11-12
Class of 2020 Nominees.....	12
Administrative & Planning	13
Finance Committee.....	13
Property Committee.....	14
Stewardship Committee.....	15
Grounds Committee.....	15
Hospitality Committee.....	16
Diaconate	16
Missions Committee.....	17
Tea Room Committee	17
Capital Campaign Plan.....	18

WHAT WE BELIEVE

ROOTS

We affirm the central truths of historic Reformed and Biblical Christian faith, seeing ourselves in a long line of generations taking part in the endless conversation between God and people. We believe the Holy Scriptures to be the voices of many who have come before us, inspired by God to pass along their poems, stories, accounts, and letters of response and relationship with each other and the living God. To know where we are going, we have to know where we have been.

REDEMPTION

We trust that God wants to bring about a new humanity by redeeming every part of us. We embrace the salvation Jesus offers as the only hope for the healing of our relationships with God, each other, ourselves and creation. We believe that all of life is spiritual, and that all of our fears, failures, and brokenness can be restored and made whole. We value the process of our journeys because we want to be fully integrated people—with all our mind, body, soul, emotions and experiences offered together to God.

CALLING

We have great confidence that God will restore all of creation under the authority of Christ. We believe that every church has to ask the question: "How are we called to live out that future reality today?" We want to constantly explore, question, and wrestle with new and creative ways to live out and communicate the teachings of Jesus. Since we see ourselves as much called to new living as Abraham was when he was called out of the Babylonian city of Ur, change is expected and rebirth is welcomed.

COMMUNITY

We value the image of God in all people, everywhere. We believe that we were created to live deeply with one another; carrying each other's burdens, sharing our resources, praying for and confessing our sins to each other, suffering and celebrating together. It is in these honest, loving relationships that God transforms us, and truth of Christ's promises becomes a reality. The way of Jesus cannot be lived alone.

SERVING

We believe that Jesus is God in human form, and that the church is God's ongoing presence in the world. Led by the Spirit of God, we are passionate about relieving suffering and fighting injustice by joining the God of the oppressed in living out the transforming message of the resurrected Jesus. Jesus calls his church to be a compelling force for good in the world, and we believe that the church is at its best when it serves, sacrifices and loves, caring about the things God cares about. We were created to live for something larger than ourselves.

CELEBRATING

We take great joy in partnering with God to change the world, embracing the truth that all of life is sacred, hope is real and that tomorrow can be better than today. We celebrate the divine in the daily, pursue lives of hope, reflect gratitude, and renew ourselves in worship. God invites everyone everywhere into this way of life, and we believe it is the best possible way to live.

MESSAGE

FROM OUR PASTOR



DEAR FRIENDS IN CHRIST,

There's a church on every corner here in Charleston or so it seems. I often make reference to that when I welcome folks to worship. The fact is you may read in many places that too many options, too many choices can not only cause confusion but aversion.

So what causes someone to choose Second Presbyterian Church amid the myriad choices? I know one thing is our dynamic website. Another is the word of mouth and personal invitation.

I knew one newly arrived fellow who said that he and his wife hadn't found a church yet, but he knew that she would only

come to a church that 'looked like a church.' I said, "Have I got a church for you!"

But once someone has come, we know that the church must be welcoming, people need to see people like themselves, there must be evidence of the Spirit's presence and guidance. And, there must be opportunities for them to participate. And if not involved and engaged statistics say that they'll be out the back door within six months.

So this report before you is a reflection of the church that more and more folks are choosing to visit and then make their home – a home that is multi-generational, multi-ethnic, and unified in its love for Jesus Christ and each other.

So take a look, a leisurely look, at what God is doing at Second Presbyterian. The hope is that you will see many things that you've nourished and grown and by which you've been enriched.

Here's to a spirit of 'healthy discontent' – a recognition of work well done, but that could be a little better.

Please know my gratitude to each of you, the lay leaders, the deacons, and the session for faithfulness as God calls us to His future here in Wragg Square and beyond.

In anticipation and joy,

Rev. Cress Darwin

LIFE

OF THE CHURCH

CHURCH ACTIVITIES

Early morning kickboxing & power lifting; Young Professionals Fellowship Groups; Young Families Group; Women's Bible Study Group; 2nd Presbyterian Men's Society; Youth Fellowship Gatherings; Annual Oyster Roast; 2nd Edition Book Club; Seersucker & Fancy Hat Sunday; "Seconds Please" Tea Room; "Supper at 2nd" Wednesday Night Fellowship, Summer at Second (summer camp), Food Drives for Lowcountry Food Bank, Souper Bowl Sunday, Operation Christmas Child, Journey (Campus Ministry)

PARTNERSHIPS

Charleston Bible Society, Easter Egg Hunt and Vacation Bible School with First Scots, 1st Wednesday Men's Luncheon at St. Philips, Lowcountry Pastoral Counseling Center; Gospel Choir & Spiritual Ensemble, Community Worship Services at Thanksgiving and on Maundy Thursday, MUSC Camp Communication (for hearing impaired children), Hands of Christ, Sisters in Serenity, The Shaw Center

CONGREGATIONAL STATS

2016 End of Year Congregational Statistics
- Marion Mitchell, Clerk of Session

Membership: 263

New Members: 18

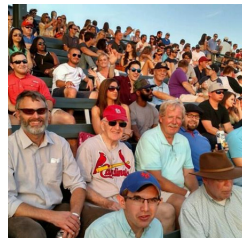
Baptisms: 5 (4 Children, 1 Adult)

Weddings: 5

Certificate Transfer Losses: 8

Deaths: 3

Other Losses: 18



NEW MEMBERS

2016

NOT PICTURED: Cassandra Hutchens, Dennis Blankenship



Felicia Sanders



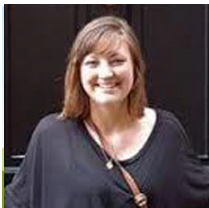
Charles & Denise Girard



Elizabeth Briggs



David Austin



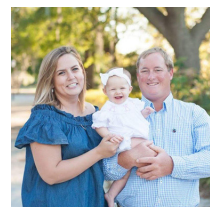
Megan Reynolds



Morgan Byars



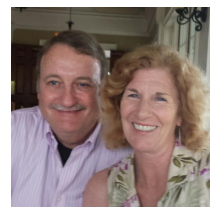
Sally Caithness & Nathan Walker



Josh & Sarah Elizabeth Craw



Cullen Edwards



Gene & Christina McMurray



Katherine Lawrence



Craig & Sally Ramsdell

CHAPEL

9:30 AM SERVICE

The Chapel service now maintains stable attendance and an increasingly diversified gathering of worshippers. After the Session voted to move the Chapel from 9 am to 9:30 am, average Sunday attendance increased from 35 to 43. Holly Slice continues to do a wonderful job as Director of Chapel Music, and has held this position longer than any previous director. The Chapel continues to serve as church home to a number of college students in Journey, and has seen some older worshippers who first visited Second Presbyterian through the Chapel service become members in the past year.

- Colin Kerr



MUSIC & WORSHIP

COMMITTEE

**Pat Mellen, Erin Mellen, Bill Read, Peggy Hay, Julia Harlow, Virginia Street,
Cress Darwin, Tina Smith, Colin Kerr**

The Music and Worship Committee often says that they touch upon everyone's life that worships, visits, has business connections and participates in the weekly calendar of our life. Be it small group studies, meals, exercise and prayer or our choir and bell musicians. It seems that the work and play of this beautiful Church and its members never ends and night and day bears witness to our beliefs in God, in the sense of Trinity, and our care for the many people that make up Charleston.

This year we have seen the two worship services strengthen and bond together and evidence of growth both in numbers and in faith. Our music has reached new levels of performance and style. Be it the Anthems of classical nature to the joy of modern music for worship often complemented with the voices of young children. The committee has catalogued the many duties of our service and prepared a calendar system for future members to easily follow. All facets of daily life of our church are reviewed and followed by the committee members to seek adherence to the Book Of Order and the glory of God.

- Pat Mellen

MUSIC & WORSHIP

Dr. Julia Harlow, Holly Slice

The completion of the carpet removal project in the sanctuary last May has enhanced the acoustics of the sanctuary significantly. The choir, bell choir and piano are much more easily heard downstairs and the sound of the organ has been improved as well. We have often had Allyson Carrington play solo harp and the sound is good enough that it isn't necessary to amplify the harp.

The Adult choir continues to sing weekly in the service in repertoire ranging from Renaissance polyphony to works composed this year. The Advent musical offering in 2016 was the Magnificat by 17th c. Italian composer Isabella Leonarda, with choir, strings and organ. Andrea Scheulen, soprano section leader and Junior Choir director, left last fall and Holly Slice or Jessica White have been able to step in from time to time to help with soprano singing. As of this writing, April 2017, Harriet Rogers has been hired as soprano section leader, and Julia Harlow has assumed leadership of the Junior Choir, i.e. middle-school age. Holly has started a young childrens choir in 2017. The Junior Choir has been singing approximately monthly in the service.

We had guest instrumentalists, Erin Norton and Lauren Balltrip, violinists and Nick Roddey, flute, who have been members of Second, and Ashley Yoon, violin, a high school student, among others, play in the 11:15 service. Members of the Charleston Gospel Choir or Spiritual Ensemble sang three times in services, and will continue to do so. The Bell Choir continues to play monthly in the service. We had joint services with several area churches both for Maundy Thursday and Community Thanksgiving Service, as well as the Community Prayer service in June, and Service of Comfort and Hope in January.

The choir continues to improve vocally, and a move to a 6:30 pm time on Wednesdays has been helpful because rehearsals now end earlier.

In November, copies of the new Presbyterian Hymnal, "Glory to God" were purchased for the sanctuary. These will help to enhance the worship service for many years to come.

- Julia Harlow

Director of Music and Organist



During April, Holly Slice joined our church staff as Director of Chapel Music.

In order to reflect the blended Chapel worship, new hymnals, "Hymns Modern and Ancient," were purchased and have been a great resource.

The children presented a wonderful Christmas Pageant, sharing the story of Christ's birth through acting, narration, and nine musical selections. Over 20 children were involved in the production.

In response to the participation in Christmas Pageant, Children's Choir recently launched to further encourage our youth's spiritual and musical development.

- Holly Slice

Director of Chapel Music

CHRISTIAN EDUCATION

Liv Cappelmann, Sue Henderson, Erin Kerr, Erin Mellen, and Laura Ott



Christian Education at Second Presbyterian is widespread with Sunday Morning classes, Wednesday Evening programs and other weeknight Bible Studies. We also plan and implement special events like The Fall Festival with the Kindergarten and the Kindergarten Sunday Celebration. The Christmas Pageant under Holly Slice's direction was a huge success enjoyed by our entire church family. The pageant was followed by the annual S'mores and Lighting of the Park. We also continue to partner with First (Scots) Presbyterian to host the annual Easter Egg Hunt in Wragg Square and Vacation Bible School.

We are continuing to see the weekly Young Adult groups grow in their faith and size on both Tuesday and Thursday nights. The young adults meet in different houses in West Ashley and Downtown and offer a point of entry into the life of Second Presbyterian. There have been many young adult leaders serving in various capacities in the church school and church who have been nurtured in the small group ministry.

We kicked off the year with Homecoming Sunday on August 28, 2016, recognizing children and youth who made milestone transitions in school. Each Sunday we offer Sunday School for children beginning at 10:00 a.m.

We also have Sunday School for preschool children at 10:00 downstairs and childcare for children under 3. The children and youth have choirs beginning at 10:30 a.m. The Mixed Adults class, led by Dingle Howe, continues to work through the Present Word curriculum beginning at 10am.

Nine Youth are participating in this year's Confirmation Class that began March 19, 2017. They are studying the pillars of the Reformed Faith Tradition using "Theocademy" curriculum and led by Liv Cappelmann. The class is sponsoring a food drive to benefit Sea Island Hunger Awareness Foundation.

Christian Education offerings on Wednesday night beginning with dinner at 5:30 and study groups begin around 6:15. The children all join together for fun and meaningful lessons taught by Domonique Brown, Liv Cappelmann, and Jessica Rodman. Childcare is provided by Ellie Smoak for under 5 year olds. The Young Families group tackles books such as Breathing Under Water, Let Every Heart Prepare Him Room, and The Lotus and the Cross. The Women's Bible Study has continued to grow and is an energetic group as they welcome new members and continue to pray and study together. It has been a huge help to have the different ministry groups of Second Presbyterian take responsibility for the meals on a weekly basis. Many thanks to all the hands who have helped prepare meals this year: Session Groups A, B, and C, Women's' Bible Study, Tuesday & Thursday evening Young Adult Small Groups, Mixed Adult Sunday School, Men's Sunday, and Young Families Study Group.

We look forward to closing the Wednesday Night Program with a big production, The First Annual Second Presbyterian Talent Show. Children and Adults will showcase their many gifts and talents. Plan to join us in the audience or if you choose, on the stage! The date is May 17, with supper at 5:30 and show time at 6:30. Supper is \$6.00 a person with at \$15 family max.

SPK - KINDERGARTEN



Second Presbyterian Preschool and Kindergarten Parents and Staff have been focusing on improving the exterior space of the school: the playground, the back entrance from the parking lot, the landscape and the outdoor play equipment. We are also working on improving the security of the whole school. The Parents' Guild has invested fundraising efforts in improving the appearance of the kindergarten building and grounds. The Fall Festival and Food Sale is more than a fundraiser. It is a great evening of family fun featuring a carnival and a concert by our own Miss Irene Rose Smith. The Spring Fiesta and Auction is a great event for our parents that also raises money for school improvements. This year we enjoyed the music of the multitalented Jimmy Moore, father of Maxwell and Griffin.

Erin Beam is President of the Parents' Guild. The School Board is composed of: Erin Beam, Braxton Williams, Brad Milner, Allyson Schmidt, Liv Cappelmann.

- **The Guild purchases much needed extras for teachers such as easels, audio equipment, books and games.**
- **The Guild organized, with the help of Erin Kerr and Olivia Cappelmann, the Kindergarten Sunday Event. The children gave us a musical presentation under the leadership of Miss Irene Rose Smith, our music teacher.**
- **The Weekday Staff spends many hours making our classrooms attractive and safe for the shared use with the church school. We share our resources with the Sunday School.**
- **Parents' Guild funds pay for safe and effective mosquito and gnat control.**
- **The school maintains the back entrance to the grounds and the play areas.**
- **The school also has 2 large service projects: A food drive that benefits the Lowcountry Food Bank and The Operation Christmas Child that sent Christmas Gift boxes to 100 children in area where these are the only gifts children receive. We also collect money for the Susan G. Komen Foundation.**

The Weekday Program serves fifty two children ages 2 years through 6 yrs. Routinely 15-20 of these children attend the Wednesday night children's youth group activities. Many of the young families who have joined our Church have come to us by way of the weekday program. The school is a Christ centered program and the Christian atmosphere is most visible on Wednesday mornings when we gather to worship in the Chapel.

Parents often join us at this joyful time to praise God through the Word, music, prayers and stories. Liv Cappelmann, our children's ministry leader, spends time with the children and the staff and we plan children's events together. Liv coordinates the chapel teaching and music with Irene Rose. The church staff and the staff of the weekday program work closely together spread the gospel to young children.

SCHOOL STAFF

Sue Henderson, Director

Irene Rose Smith, Music and Spanish

Susan Lau, Kindergarten Volunteer

Chris Bailey and Amy Prause, Preschool (3) teachers

Erin Kerr, Assistant Director

Sarah Elizabeth Crow, Kindergarten Teacher

Allie Wilkins and Katherine Albright, Pre-K (4) teachers

Sue McManus and Mary Brown, Preschool (2) teachers

JOURNEY

Presbyterian Campus and Young Adult Ministry, Journey: A validated ministry of the Charleston Atlantic Presbytery, PC(USA); and an initiative of the 1001 New Worshiping Communities; www.CharlestonJourney.org.

This has been a year of great and challenging changes at Journey: A Worshiping Community for College Students. We've been incredibly blessed to host our first ministry resident, Bo Barrington, serving as our Associate Director of Discipleship. We have also continued our part-time Director of Women's Ministry position, employing licensed Christian counselor Kate Eldean. Additionally, in order to be more accessible to freshmen, we have moved out of the King Street bar and onto the College of Charleston campus for Wednesday night large groups. However, we lost our meeting space for the Spring semester and are currently worshipping in the fellowship hall of Second Presbyterian Church. Financial support has decreased significantly from Charleston Atlantic Presbytery churches, but successful grant applications have improved slightly. A "Journey Partner" initiative is being created to improve and expand donor relations. Journey traveled to Cuba for their 2017 Spring Break Mission Trip.



COLLEGE OF CHARLESTON

The Presbyterian campus ministry at the College of Charleston is one of the largest and most publicly visible campus ministries at the college. This year we are teaching "Apologetics" in the Fall Semester and "Christianity, Politics, and Culture" in the Spring semester. This is the third year of our three-year scope and sequence for spiritual formation.

Total students this year: 80+ (75+ last year)

Average attendance this year: 45 - 80 (30 - 70 last year)

Public decisions this year to follow Jesus: 1 (1 last year)

Seniors graduated this year: NA (9 last year)

Small groups this year: 5 (5 last year)

Mentors this year: 16 (8 last year)



Top 5 of 9 aspects students say they love most about Journey this year:

#1 Messages **#2** The other people there **#3** Worship

#4 Retreats **#5** Table discussion time

When asked, "**When it comes to God changing lives in Journey, have you seen that happen?**" **38%** of students said they directly know someone in Journey who has had their life significantly changed by God and **18%** said they indirectly know of someone who has had their life significantly changed by God. **25%** said that in one semester, God had significantly changed his or her own life!

Other encouraging statistics:

48% of students have "close" or "best" friends in Journey. **54%** of students have successfully invited friends with them. At the beginning of the academic year **18%** of students surveyed said they did not identify as Christian, but by the second semester **only 8%** did not identify as Christian. We have at least **14** denominations represented.

THE CITADEL

After three successive Associate Directors serving as the primary leader at the Citadel, Journey Director Colin Kerr has returned to the Citadel for Monday large groups alongside the Associate Director Bo Barrington, as we return to tracking with the three-year scope and sequence. This has created some additional pastoral stability.

Total students this year: 40 (35 last year)

Average attendance this year: 20-40 (15-35 last year)

CHURCH LEADERS

SESSION, ELDERS & DEACONS

ELDERS

Class of 2017: Randy Cook, Claire Freeman, Jim Kimmett, Peter Rupert

Class of 2018: Sue Henderson, Brad Milner, Marion Mitchell, Laura Ott

Class of 2019: AJ Manett, Jerald Hucks, Debra Gammons, Aled Pritchard

DEACONS

Kenneth Ayers, Allison Carrington, Ruth Carr, David McClure, Cathy Lipp, Susan Lovell, Meredith Mosney, Tina Smith, Sara Gouldon, David King, Ani Lees, Dolly Hamlin

Class of 2017: Sara Gouldon, David King, Kenneth Ayers, Tina Smith

Class of 2018: Ruth Carr, Allyson Carrington, Meredith Mosny, Ani Lees

Class of 2019: Cathy Lipp, Susan Lovell, Dolly Hamlin, David McClure

NOMINATING TEAM

Dolly Hamlin, Liz McNulty, Erin Kerr, Waring Howe, Peter Rupert, AJ Manett, James Hackett, Cress Darwin (ex-officio)

2016 OFFICERS OF THE CORPORATION

Spence Roddy, President

Patterson Smith, Vice President

Peggy Hay, Secretary

CHURCH LEADERS

CLASS OF 2020

SLATE OF NOMINEES

ELDERS



Tina Smith

Tina was born in Pittsburgh, Pa, graduated from Georgetown University with a BS in nursing, and eventually settling with husband Ralph in Bethesda, Md. in 1959 where she lived for 30 years. She is now retired from the Medical University Hospital Authority and resides in West Ashley near her two daughters. Born and raised in the Presbyterian Church, she has been a member at Second Presbyterian since 2009.



Dave Jackson

Born in Midland, Michigan. Went to college at Michigan State and graduate school at Florida. Currently works at Boeing as an Authorized Qualification Representative.



Sarah Morton

Sarah was born and raised in South Carolina. A graduate of Presbyterian College and the University of South Carolina, she is a co-owner and speech language pathologist at Chatterbox Kids, Inc. She has been a member of 2nd Presbyterian since 2009, and has been involved with Chapel Leadership and the downtown Bible Study group, and has served as a Deacon as well as on the Stewardship and Music and Worship Committees.



Nathaniel R. Walker

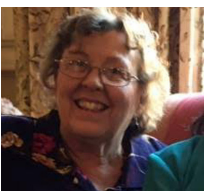
Nathan is from Little Rock, Arkansas and Tennessee. He and Sally have been married for ten years and have two children. He is the Professor of Architectural History at CofC and has been in Charleston a year and a half.

DEACONS



Erin Mellen

Erin is a longstanding member of Second Presbyterian and currently serves as the Childrens' Sunday School teacher. Erin loves history and travel and after graduating from Columbia College she lived in South Korea and Germany before she and Pat settled in Charleston after his retirement from the army in 1972.



Sarah Mitchell

After twenty plus years in St. Louis, Sarah and her husband, Marion, moved to Wadmalaw in 2011 and joined the Second family in 2012. She taught high school math and currently tutors at the Shaw Center. She enjoys conferences, crafts, and the bell choir.

ADMIN & PLANNING

COMMITTEE

Claire Freeman, Cress Darwin, Peter Rupert, Marion Mitchell, Patterson Smith, Randy Cook

We strive to be thoughtful, efficient, and proactive as the AP Committee. We have managed to disagree on certain issues without being disagreeable. Our purpose as members of our committee is not to have our ways as individuals, but to act according to our purpose in one accord to further God's purpose for Second Presbyterian Church. Our session retreat was a powerful and productive time.

Our committee has its finger on the pulse of most other committees. We support and are grateful for all of the work of many of our church members, both session members and others who have served joyfully to encourage growth through our missions projects, Chapel service, Wednesday night activities, Kindergarten, Christian Education, Tea Room, music programs, stewardship and so much more.

Our relationships are strong, as is our vision for the future of our worship community.

- Claire Freeman

FINANCE

COMMITTEE

Peter Rupert, Patterson Smith, Mia Maness, Dingle Howe, Norman Hook, Debra Gammons

The Committee is responsible for overseeing the finances of the Church, preparing an annual Budget and monitoring the Church's investments.

The 2017 Budget was submitted to the Session and approved in January. This year's Budget is \$558,850. The Treasurer submits a weekly report to all members of Session as well as Committee members that shows the income to the Church. In addition, the Treasurer and the Bookkeeper prepare a monthly report that shows all income and expenses that is also distributed. The Church employs a part-time bookkeeper, Christy Hulsey. The Church's investments are managed by Wells Fargo Advisors (Millenium Private Wealth) and as of March 31, the portfolio value was \$905,233. In addition, the Church does have some other restricted funds with the Presbyterian Foundation and the Coastal Community Foundation that total \$68,521.

Giving as of March 31, is slightly below budget and due to unexpected income during the last quarter of 2016, the investment draw to date has been less that budgeted.

Any member of the Church who would like more information should feel free to contact Peter Rupert, the Church Treasurer.

PROPERTY

COMMITTEE

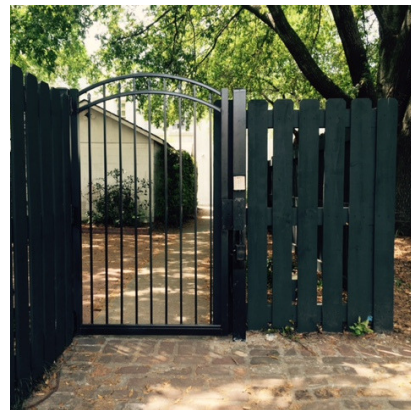
**Pat Mellen, Jerald Hucks, Patterson Smith, Peter Rupert, Bob Hoffman,
Jim Kimmet, Spence Roddey, Randy Cook**

The Property Committee of our Church literally does not sleep. We are on call 24/7 and spend both our time and our money frugally. This has been a busy year that has required many meetings both by our Patent applied for multiple format communications between members and our occasional face to face encounters. A review of our efforts includes:

- The unit per unit replacement of aging fluorescent ballasts and tubes with a more modern LED format has been undertaken in a manner that improves the quality of lighting and relieves the load upon the existent wiring of our Education building and will eventually encompass the entire property system.
- Coordination of the recent use of our property by the film entertainment company. The Session's approval of this undertaking has greatly benefited both the church and its congregation.
- Improved the security system utilized by the Church in both the physical security of the property and the fire warning apparatus.
- Planned work days that spruce up the fabric of the physical property and by incorporation of a congregational workforce improved friendships of new and older members.
- Started a detailed examination of the physical plant so that we can begin an organized plan to raise the capital necessary to guarantee the structural integrity of our beautiful and historic Church and the congregation's safety and utilization of our assets.
- Delegated Jerald Hucks as our representative to the Session, a job he has attended to in a grand and helpful manner.

The committee wish to point out two undertakings that improve our daily life and the beauty of our property. First and foremost Sue Henderson's efforts and success in installing a new brightly painted fence and gate to the back of the cemetery and the outside entrance to our Kindergarten. This replaced the old and worn Chain link fence. A parent of one of our Kindergarten children enabled this. Also the City through the Parks Conservatory is installing an underground sprinkler system for Wragg Square in the front of our Church.

- Pat Mellen



STEWARDSHIP

COMMITTEE

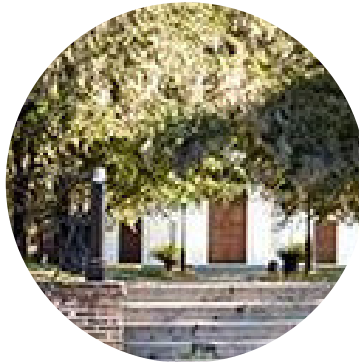
Laura O'Neill Ott, Peter Rupert, AJ Mannett, Debra Gammons

This year's stewardship campaign encouraged members of our church to become part of God's plan for Second Presbyterian Church.

We began stewardship season with an October 2 "Kick-Off Sunday" and a letter to all members and regular attendees. For the next 5 Sundays, various members shared messages at both the Chapel and 11:15 services about why it is important to be a steward of Second Presbyterian Church. Our Fall newsletter included a stewardship message about the importance of participating in the mission of the church, and in Sunday school, the children discussed the importance of being stewards of God's church. We concluded the official season with Commitment Sunday on October 30th.

The support for the stewardship campaign was positive and encouraging. Over 50% of our active members pledged for 2017 and committed \$276,000 to the church. There is clearly still much work to be done to educate our members and our new membership on the importance of giving back to the church and supporting its mission to spread the word of God. The committee was encouraged by the enthusiasm of the church family during stewardship season, and it is up to the challenge of continuing its work to increase participation in the church.

- Laura O'Neill Ott



GROUNDS

COMMITTEE

Second Presbyterian Church is pleased with the landscaping work of Lowcountry, FLP, LLC. The grounds now boast new plants added at the top of Wragg Square thanks to the Session-approved movie filming at the church. And the city continues to improve upon the steps which serve as the church's Meeting Street entrance.

Be on the lookout for a spring cleanup date to be determined. It will be added to the calendar when appropriate. There are ways for everyone to contribute. If you don't want to do physically demanding work we can accommodate you.

HOSPITALITY

COMMITTEE

Aled Pritchard, Cathy Hinson

The Hospitality Committee provided meals and events both big and small at the church this year. We worked closely with Perrin Tribble to implement a more organized Wednesday Night Supper schedule and have enjoyed numerous events including multiple New Member Lunches, an Advent Brunch, and the Annual Oyster Roast. Perhaps most memorably, we organized the meal in conjunction with the Ecumenical Worship Service for the anniversary of the Mother Emmanuel tragedy. This meal brought the community together both through fellowship and the great outpouring of support from local churches, restaurants, and businesses that volunteered to provide for that event. The Board of Deacons will be assuming all hospitality responsibilities this coming year as part of their existing care, hospitality, and culinary duties.

- Aled Pritchard



DIACONATE

Board of Deacons; David Hinson, Moderator

The Board of Deacons is a congregational care board ministering to our members with care and compassion during times of need or distress. The Board functions as several different committees:

Care Team

Our team continues to care for all members who were sick or in need of a home or hospital visit. During time of illness, or the death of a family member, our care team has been there with a loving touch on a moment's notice. Deacons have made numerous home visits, and worked with Elders to help provide home Communion for our members when they couldn't come to church.

Communications

Each Deacon is assigned members of the congregation whom they are responsible for as a primary point of contact. They will represent the pastor in the event the member needs deacon care.

General Congregational and Church Care

Deacons provided help during graveyard and grounds clean up during the Spring and Fall.

Culinary-Hospitality

The deacons helped the Hospitality Committee, who organized events, memorials and funeral receptions. Deacons served faithfully during both weekends of our Tea Room.

MISSIONS

COMMITTEE

**Sarah Mitchell, Sarah Hartman, David Savard, Cathy Hinson, David McClure,
Patterson Smith, Kate Wyllly Stanton, Kristin Wallace, Marion Mitchell**

The Second Presbyterian Mission Team continues in its goal to share God's love locally and globally, to give food to the hungry, drink to the thirsty, welcome to the stranger, clothing to the naked, and care to the sick (Matthew 25:35-36). Last year we gave \$776 to One Great Hour of Sharing, one of our denominations special offerings, and \$1000 to Sea Island Hunger Awareness. We gave \$2000 to Water Mission, and several congregation members participated in and gave to the Walk for Water in March. We gave \$1000 to Star Gospel Mission and the same amount to The Coastal Crisis Chaplaincy. Hands of Christ distributed clothing to school children from our Education Building for two days last August and will do that again this year, supported by our gift of \$1000 and many hands to load supplies in and out and to lead each child in their "shopping". We gave \$2000 to the Medical Benevolence Foundation for use in hospitals in Haiti and the Democratic Republic of the Congo.

Other mission disbursements for last year were \$2000 to support our mission co-worker Leisa Wagstaff, training educators in South Sudan, \$1000 to nearby Shaw Center, where school children are involved in many after-school activities, \$500 to Presbyterian Disaster Assistance for flood relief in South Carolina, and \$500 to the Colin McKay Grant Home. The congregation also gave to the three other denomination-wide offerings in 2016: Christmas Joy, \$754, Pentecost, which includes support for our own youth programs, \$317.70, and Peace and Global Witness, \$227.27. We also have special offerings for Thornwell Home for Children and Presbyterian Communities of South Carolina. All these gifts of our money and our hands are given in the name of our Lord Jesus Christ, pointing to Him and His Kingdom.

- Sarah Mitchell

TEA ROOM

COMMITTEE

**Dolly Hamlin, Erin Beam, Sarah Mitchell, Mia Maness,
Sue Henderson, Ruth Carr, Kurt Taylor, Meredith Mosny and Cathy Hinson**



The Tea Room Committee of Second Presbyterian church is comprised of 9 committed members, who have dedicated countless hours to the success of our Tea Room. This committee runs like a fine-tuned machine, as we have worked closely together for many years. Our committee's work creates a multi-generational fellowship that reaches out into the community, delivering Second Church hospitality through FOOD and FUN! Our biggest challenge, from year to year, is staffing. It almost always comes down to the wire that our staff positions are filled. It is extremely important that the members of our church know how critical their participation is. The end result, a successful Tea Room, means a substantial contribution to the Missions programs of our church. Last year, that contribution was \$8,000.

We, as a committee, are blessed to be able to serve the Kingdom of God through our Tea Room. FELLOWSHIP, FOOD & FUN is our motto! Hospitality is our God-given gift to all who walk through our doors. We look forward to another successful year.

- Cathy Hinson

CAPITAL CAMPAIGN

PLANS

For over 200 years the strong, stately walls of Second Presbyterian Church have provided a safe place to gather, to worship God, to celebrate the sacraments, to marry, to welcome new members, to mourn the loss and celebrate the lives of loved ones, but most importantly to point to Jesus Christ! These walls have provided refuge for the hurt and lost, the needy and the worn out as well as a place for celebrations and new beginnings. Our sanctuary has survived hurricanes, fires, an earthquake and a civil war, and it still stands as a symbol of the strength and endurance of God's Holy Kingdom.

Did you know that no major renovations or preservation efforts have been undertaken since 1989 when Hurricane Hugo badly damaged both the sanctuary and education building? As stewards of this church, it is our responsibility to ensure the structural integrity and safety of the church buildings as well as to make updates to ensure that the buildings fulfill the needs of the congregation in its efforts to do God's work within the church and throughout the community.

Therefore, in the very near future, we will be undertaking a Capital Campaign to raise the necessary funds to refurbish, modernize and preserve the church as needed. God has provided for this church and its congregation for generations, and we are certain God will continue to bless us through this effort.

This is an exciting opportunity for Second Presbyterian Church! As we work through the early stages of this project and assess what work must be done, we pray that our actions honor those that have come before us and bless those who are to come. Most importantly, however, we pray that our actions follow God's plan for us as we seek to do God's work here in Charleston and beyond.

- Laura O'Neill Ott

